

Criteria

		Mark	Weighting
Q1	Offers site area in accordance to BB99 (confined site with playing field)	9	5%
Q2	Places the facilities where they can be extended as delivering at the heart of the community.	9	5%
Q3	Offers a location that is central to the community with safe routes to school	8	4%
Q4	Offers the opportunity for a good well designed school	7	4%
Q5	Offers little disruption to existing children in the delivery.	5	3%
Q6	will create a highly stimulating and 21st century learning environment	8	4%
Q7	Offers close access to open space and playing fields	6	3%
Q8	Connects the services to the wider Efford plan	6	3%
Q9	Enhances the urban landscape of Efford	5	3%
Q10	Offers diversity and choice.	6	3%
Q11	Offers good views to inspire the education experience	3	2%
Q12	Offers a well serviced site	3	2%
Q13	Generates the highest yield to the affordability envelope	7	4%
Q14	Reduced the libility of condition and suitability	6	3%
Q15	Is achieved in a short period of time reducing the affordability	5	3%
Q16	Offers highest potential for energy recovery	6	3%
Q17	Meet Value for Money objectives	8	4%
Q18	Be deliverable in a very short period, therefore needing low abnormal site costs and land ownership issues.	8	4%
Q19	Complexibility to construct	9	5%
Q20		0	0%
Total		124	62%

Board

	Person	Position	weighting
B1	Gareth Simmons	Senior education Officer -responsible for capital planning	high
B2	Andrew Leigh	Senior education Officer -responsible for School Organisation	high
B3	Michelle Endacott	Capital Planning Officer responsible for the Central section of the City	high
B4			high
B5			high
B6			high
B7			high
B8			high
B9			high
B10			high
B11			high
B12			high
B13			high

Project

	Project
O2	Build new school on Plymview site
O6	Build new school on Highfield site
O3	Build new school on playing fields

Person status

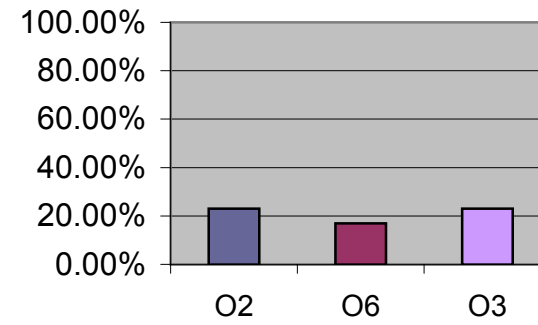
High	10
Medium	5
low	1

Q1 Offers site area in accordance to BB99 (confined site with playing field)

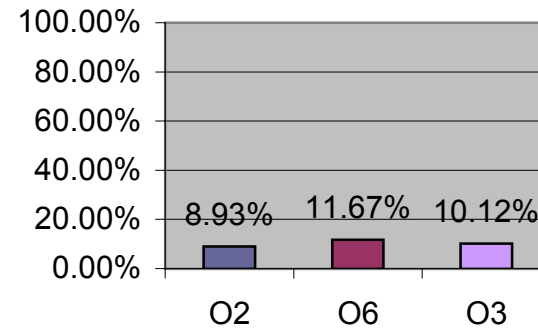
1 = low and 10 = high

		O2 Build new school on Plymview	O6 Build new school on Highfie	O3 Build new school on playing f
Gareth Simmons	high	10	7	10
Andrew Leigh	high	10	7	10
Michelle Endacott	high	10	8	10
0	high	0	0	0
0	high	0	0	0
0	high	0	0	0
0	high	0	0	0
0	high	0	0	0
0	high	0	0	0
0	high	0	0	0
0	high	0	0	0
0	high	0	0	0
0	high	0	0	0
0	high	0	0	0
0	high	0	0	0

Scores for this Question



Scores for total project



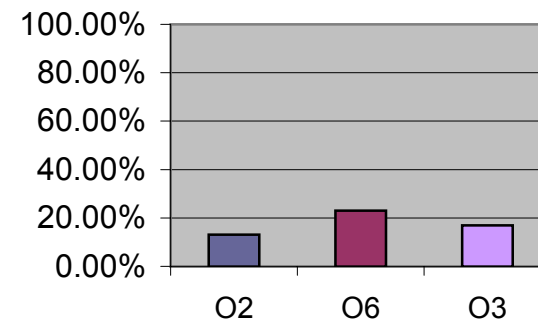
high	medium	low	score 1	score 2	score3
10	FALSE	FALSE	100	70	100
10	FALSE	FALSE	100	70	100
10	FALSE	FALSE	100	80	100
10	FALSE	FALSE	0	0	0
10	FALSE	FALSE	0	0	0
10	FALSE	FALSE	0	0	0
10	FALSE	FALSE	0	0	0
10	FALSE	FALSE	0	0	0
10	FALSE	FALSE	0	0	0
10	FALSE	FALSE	0	0	0
10	FALSE	FALSE	0	0	0
10	FALSE	FALSE	0	0	0
10	FALSE	FALSE	0	0	0
10	FALSE	FALSE	0	0	0
10	FALSE	FALSE	0	0	0
total			300	220	300
%			23.08%	16.92%	23.08%
O2				23.08%	
O6				16.92%	
O3				23.08%	

Q2 Places the facilities where they can be extended as delivering at the heart of the community.

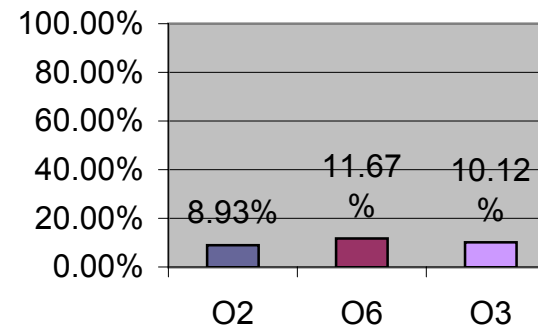
1 = low and 10 = high

		O2 Build new school on Plymview	O6 Build new school on Highfield	O3 Build new school on playing field
Gareth Simmons	high	6	10	7
Andrew Leigh	high	5	10	7
Michelle Endacott	high	6	10	8
	0 high	0	0	0
	0 high	0	0	0
	0 high	0	0	0
	0 high	0	0	0
	0 high	0	0	0
	0 high	0	0	0
	0 high	0	0	0
	0 high	0	0	0
	0 high	0	0	0
	0 high	0	0	0

Scores for this Question



Scores for total project



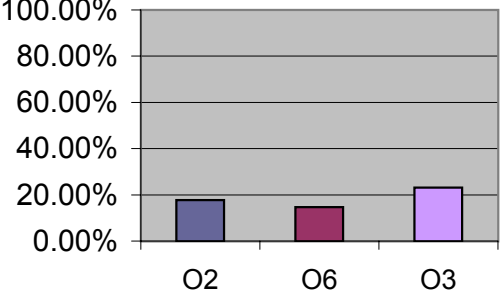
	high	medium	low	score 1	score 2	score3
10	FALSE	FALSE		60	100	70
10	FALSE	FALSE		50	100	70
10	FALSE	FALSE		60	100	80
10	FALSE	FALSE		0	0	0
10	FALSE	FALSE		0	0	0
10	FALSE	FALSE		0	0	0
10	FALSE	FALSE		0	0	0
10	FALSE	FALSE		0	0	0
10	FALSE	FALSE		0	0	0
10	FALSE	FALSE		0	0	0
10	FALSE	FALSE		0	0	0
10	FALSE	FALSE		0	0	0
10	FALSE	FALSE		0	0	0
10	FALSE	FALSE		0	0	0
total				170	300	220
%				13.08%	23.08%	16.92%
O2					13.08%	
O6					23.08%	
O3					16.92%	

Q5 Offers little disruption to existing children in the delivery.

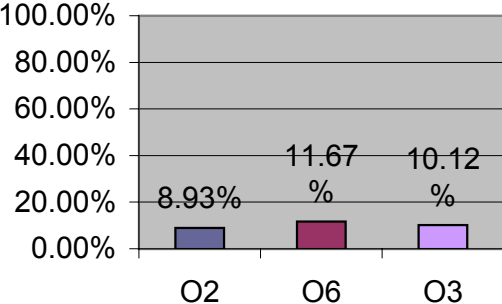
1 = low and 10 = high

		O2 Build new school on Plymview	O6 Build new school on Highfi	O3 Build new school on playing f
Gareth Simmons	high	8	6	10
Andrew Leigh	high	8	6	10
Michelle Endacott	high	7	7	10
	0 high	0	0	0
	0 high	0	0	0
	0 high	0	0	0
	0 high	0	0	0
	0 high	0	0	0
	0 high	0	0	0
	0 high	0	0	0
	0 high	0	0	0
	0 high	0	0	0
	0 high	0	0	0

Scores for this Question



Scores for total project



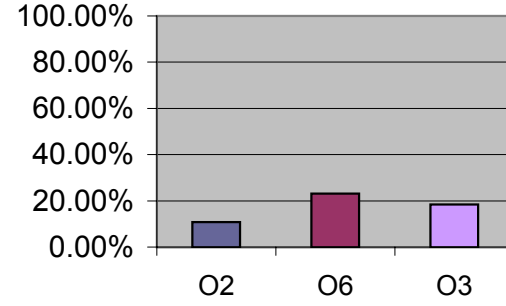
high	medium	low	score 1	score 2	score3
10	FALSE	FALSE	80	60	100
10	FALSE	FALSE	80	60	100
10	FALSE	FALSE	70	70	100
10	FALSE	FALSE	0	0	0
10	FALSE	FALSE	0	0	0
10	FALSE	FALSE	0	0	0
10	FALSE	FALSE	0	0	0
10	FALSE	FALSE	0	0	0
10	FALSE	FALSE	0	0	0
10	FALSE	FALSE	0	0	0
10	FALSE	FALSE	0	0	0
10	FALSE	FALSE	0	0	0
10	FALSE	FALSE	0	0	0
10	FALSE	FALSE	0	0	0
10	FALSE	FALSE	0	0	0
		total	230	190	300
		%	17.69%	14.62%	23.08%
	O2			17.69%	
	O6			14.62%	
	O3			23.08%	

Q8 Connects the services to the wider Efford plan

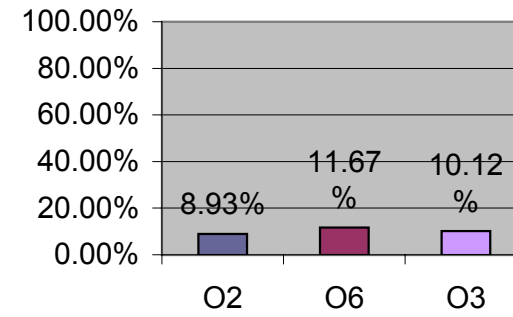
1 = low and 10 = high

		O2 Build new school on Plymview	O6 Build new school on Highfi	O3 Build new school on playing f
Gareth Simmons	high	5	10	9
Andrew Leigh	high	4	10	8
Michelle Endacott	high	5	10	7
0	high	0	0	0
0	high	0	0	0
0	high	0	0	0
0	high	0	0	0
0	high	0	0	0
0	high	0	0	0
0	high	0	0	0
0	high	0	0	0
0	high	0	0	0
0	high	0	0	0
0	high	0	0	0

Scores for this Question



Scores for total project



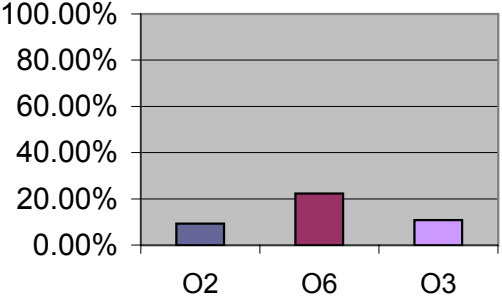
high	medium	low	score 1	score 2	score3
10	FALSE	FALSE	50	100	90
10	FALSE	FALSE	40	100	80
10	FALSE	FALSE	50	100	70
10	FALSE	FALSE	0	0	0
10	FALSE	FALSE	0	0	0
10	FALSE	FALSE	0	0	0
10	FALSE	FALSE	0	0	0
10	FALSE	FALSE	0	0	0
10	FALSE	FALSE	0	0	0
10	FALSE	FALSE	0	0	0
10	FALSE	FALSE	0	0	0
10	FALSE	FALSE	0	0	0
10	FALSE	FALSE	0	0	0
10	FALSE	FALSE	0	0	0
10	FALSE	FALSE	0	0	0
total			140	300	240
%			10.77%	23.08%	18.46%
O2				10.77%	
O6				23.08%	
O3				18.46%	

Q9 Enhances the urban landscape of Efford

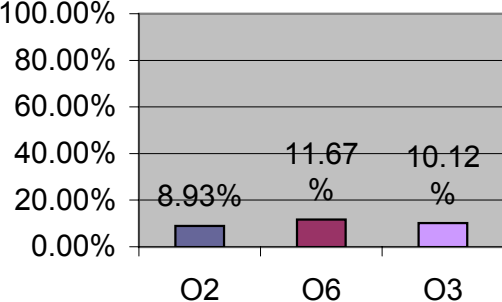
1 = low and 10 = high

		O2 Build new school on Plymview	O6 Build new school on Highfi	O3 Build new school on playing f
Gareth Simmons	high	4	9	5
Andrew Leigh	high	4	10	5
Michelle Endacott	high	4	10	4
0	high	0	0	0
0	high	0	0	0
0	high	0	0	0
0	high	0	0	0
0	high	0	0	0
0	high	0	0	0
0	high	0	0	0
0	high	0	0	0
0	high	0	0	0
0	high	0	0	0
0	high	0	0	0

Scores for this Question



Scores for total project



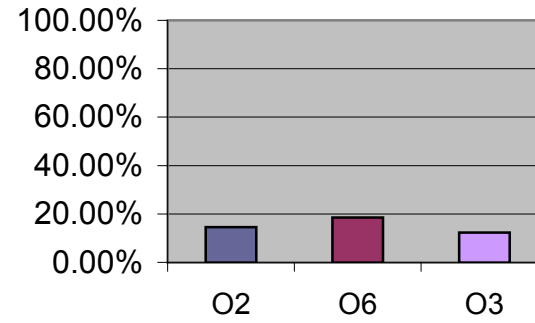
high	medium	low	score 1	score 2	score3
10	FALSE	FALSE	40	90	50
10	FALSE	FALSE	40	100	50
10	FALSE	FALSE	40	100	40
10	FALSE	FALSE	0	0	0
10	FALSE	FALSE	0	0	0
10	FALSE	FALSE	0	0	0
10	FALSE	FALSE	0	0	0
10	FALSE	FALSE	0	0	0
10	FALSE	FALSE	0	0	0
10	FALSE	FALSE	0	0	0
10	FALSE	FALSE	0	0	0
10	FALSE	FALSE	0	0	0
10	FALSE	FALSE	0	0	0
10	FALSE	FALSE	0	0	0
total			120	290	140
%			9.23%	22.31%	10.77%
O2				9.23%	
O6				22.31%	
O3				10.77%	

Q16 Offers highest potential for energy recovery

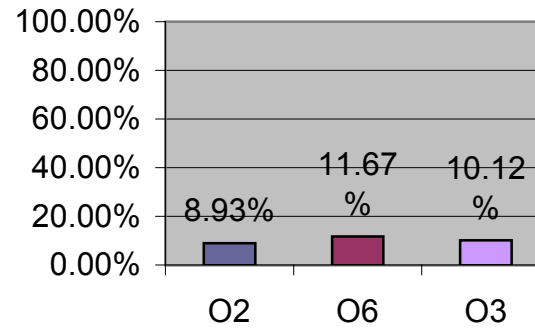
1 = low and 10 = high

		O2 Build new school on Plymview	O6 Build new school on Highfie	O3 Build new school on playing f
Gareth Simmons	high	6	8	5
Andrew Leigh	high	6	8	5
Michelle Endacott	high	7	8	6
0	high	0	0	0
0	high	0	0	0
0	high	0	0	0
0	high	0	0	0
0	high	0	0	0
0	high	0	0	0
0	high	0	0	0
0	high	0	0	0
0	high	0	0	0
0	high	0	0	0
0	high	0	0	0

Scores for this Question



Scores for total project



high	medium	low	score 1	score 2	score3
10	FALSE	FALSE	60	80	50
10	FALSE	FALSE	60	80	50
10	FALSE	FALSE	70	80	60
10	FALSE	FALSE	0	0	0
10	FALSE	FALSE	0	0	0
10	FALSE	FALSE	0	0	0
10	FALSE	FALSE	0	0	0
10	FALSE	FALSE	0	0	0
10	FALSE	FALSE	0	0	0
10	FALSE	FALSE	0	0	0
10	FALSE	FALSE	0	0	0
10	FALSE	FALSE	0	0	0
10	FALSE	FALSE	0	0	0
10	FALSE	FALSE	0	0	0
10	FALSE	FALSE	0	0	0
total			190	240	160
%			14.62%	18.46%	12.31%
O2				14.62%	
O6				18.46%	
O3				12.31%	

