

Heart of Efford News

COMMUNITY PARTNERSHIP

Issue 3

February 2006

Supported by Plymouth City Council • Published on behalf of Efford Building Communities Initiative Steering Group

St Paul's on the move – again!

The people of St Paul's Church in Efford are on the move again. The present Church has been on Torrridge Way since 1964 only. Now both Church and Hall are coming down to make way for an Extra Care housing complex for the 'frail elderly', built by Sarsen Housing Association.

Government funding for this much needed development is available only if the building starts before the end of this financial year – in April. Plymouth City Council and the Church authorities have pulled out all the stops to make it happen – at breakneck speed. The next St Paul's Hall/Church will be arising where the library is now, located at the top of Efford Lane.

In the late 1940s, many Plymouth and Devonport people were still in temporary housing after the air raids of the wartime 'blitz' had destroyed their homes. A church appeared for the first time in Efford – in a corrugated iron nissen hut on the corner of Teign Road and Dartmeet Avenue. But by 1951 the roof was seriously leaking so services and Sunday School transferred to the modern buildings of Highfield School, on Torrridge Way.

Meanwhile, plans were going ahead for a new Church, using war damage funds to replace St Paul's in Devonport destroyed by enemy action. On 26th January 1952 the foundation stone was laid – by the Revd Onyedum Ilogu, from Nigeria - for a new Hall Church on land set aside by the city in Torrridge Way. The building was completed and dedicated by October the same year.



Church activities grew and grew, and twelve years later, on 26th September 1964, the new Church of St Paul in Efford, connected to the Hall by a 'narthex', had been built and was consecrated by the Bishop of Exeter.

This box-like structure, with its landmark bell tower visible from many miles, is now at the end of its short life. At 7.30pm on Thursday 26th January – 54 years to the day after the Hall foundation stone was laid – the Church held a Service of Thanksgiving. Now the doors have closed for the last time, furniture and fittings are being removed and the demolition begins in mid-February. Plans are afoot to keep the huge coloured glass window, designed and built at Buckfast Abbey, for future use in churches in and around Plymouth.

Continued on page 2.

Inside this issue:

- Partnership update – it's time to vote!
- New Frail Elderly Scheme in Torrridge Way
- Efford Children's Centre – have your say
- In-Touch Befriending Scheme

Heart of
Efford
Community Partnership

South West of England
Regional Development Agency

City of
Plymouth

Church on the move – again!



Continued from page 1.

The people of St Paul's Church will simply be moving across the road, once again to hold their services there, thanks to the hospitality of Highfield Community School.

The new development on Torridge Way is designed to house an improved Efford Library. St Paul's are currently designing their next Hall Church, to go on the former library site, as soon as this becomes available.

So the journey of the Efford Church continues – following in its way the example of its patron saint. The apostle Paul, after he had "seen the light" spent the rest of his life travelling back and forth across the Mediterranean, never staying more than a couple of years in any one place, as he helped to spread the Christian gospel message further and further out into the world.

ST. PAUL'S CHURCH EFFORD

Church of England

Please note as from
February 1st 2006

Our 10am Sunday Morning
Services will be held in
Highfield Community School

Until the new Church is built
on the site of Efford Library.
For details of the services,
baptism and marriage
enquiries please contact
Rev'd Steve Payne on
01752 785576

Heart of Efford (HECP) update

HECP Committee elections – get on board!

Now is the time for Efford people to come forward to join the committee which will lead on the regeneration of Efford. Local people from all walks of life are needed and of all ages with differing abilities. There is something for everyone. To be a Committee member you must live in Efford, care about the community, be willing to work with others to improve the community and can sign up to our shared Aims and Objectives (see below). We will ensure that support is available for individuals, if needed, and we feel it is essential that young people, disabled people and residents from Minority Ethnic Backgrounds are represented.

Aims and Objectives

Our aim:

To further the interests and improve the quality of life of all who live or work in the Efford Neighbourhood

Our objectives:

- To listen to, consult and share information with the people of the Efford Neighbourhood
- To promote and implement initiatives to further the aim of the Partnership
- To be the lead body for all consultations relating to the Efford Building Communities Initiative and other local regeneration issues
- To become a focus for community life

The election process is not as scary as it might sound! It will be as informal as we can possibly make it. Please read the following steps to understand how it will work:

- People interested in standing for election need to fill out a

nomination form which needs to be signed by a 'proposer' (an unrelated resident who is happy to support your application). You will also need to provide some general information about yourself, for example, what you can bring to the Committee, what links you have in the community etc.

- Nomination forms will be sent FREEPOST to the Efford Team. An election will take place on 29th March (see details opposite) where attendees will be asked to vote
- There are 10 places to fill (eight residents and two local businesses or organisations).
- Co-optees (people who are unable to have voting rights – i.e. young people, Ward Councillors or other statutory agency representatives) can also put themselves forward. Co-optees will need to fill out a co-optee expression of interest form.
- The elected Committee will select co-optees at their first Committee meeting. The Committee is able to co-opt up to six Committee members.
- The deadline for completed nomination forms is Thursday 23rd March. Please note that a previous deadline of 3rd March was given and has had to be extended – apologies for this – all nomination forms received with the previous date on are still valid. There is no deadline for co-optee expression of interest forms.

How to get your nomination pack or co-optee expression of interest form:

- Call 01752 306521/306525 or email debbie.burton@plymouth.gov.uk
- A nomination pack or co-optee expression of interest form will be sent out to you
- If you need any further explanation or assistance please get in touch
- Nomination forms will be sent out to all contacts on our database.

Community Partnership ...it's time to vote!

Election night!

Come along to the first ever Heart of Efford
Community Partnership Committee Election

Wednesday 29th March 7pm-8.30pm

Highfield Community School Hall

Come along to choose your first ever Heart of Efford
Community Partnership Committee. Hear about the
work of the HECP. View information stalls...get involved!

Free refreshments and entertainment available

To help you decide if you want to get more involved here are answers to some of the questions you may have

What is the HECP?

The Heart of Efford Community Partnership will be a resident-led community organisation working for the Efford neighbourhood. The HECP will be responsible for working in partnership with other decision-makers regarding the Efford neighbourhood. The HECP will also be made up of other organisations that have an interest in improving Efford, for example, the Health Authority and Devon and Cornwall Police. The HECP's role will be to ensure that all these 'partners' work together to bring about positive change for residents living in Efford. The work will be delivered by a Committee but the Partnership is everyone living and working in Efford.

How can I become a member of the HECP?

You will be automatically entitled to become a HECP member if you live or work in the defined area. (Efford neighbourhood boundary) There will be no application form but we will ask you to provide us with your name and address at open Partnership meetings so we can write to you and inform you of the next meetings. We will adhere

to strict data protection legislation – supported by Plymouth City Council.

How will the HECP be run and what will the HECP do?

The HECP will be run by a Committee who will administer the affairs and business of the organisation. Open Partnership meetings will be held regularly for all members of the Partnership (residents and those working in the neighbourhood) to contribute to achieving the aim of the HECP. We will be driving forward projects that the Partnership feel are necessary to improve residents quality of life.

How can I become a Committee member of the HECP?

All members of the Partnership are eligible to become Committee members. An election will take place each year allowing new members to stand for election to the committee.

What else have we been up to?

As you know, the Community Partnership is about to evolve into a proper and more formal organisation – ready to work with decision-makers and lead on regeneration in Efford! We are busy preparing for our elections and will be having our last two steering group meetings in February and March. The elections

will take place in March and a fully democratically elected committee will adopt the HECP Constitution and continue the business of the Partnership from April.



We are also busy seeking out further funding for future work in Efford, assisted by Sue Rouse, East End Healthy Living Coordinator (*pictured above*). Some members of the Committee will be attending a Lottery Grant Training Workshop in February. We are also about to commission a firm of consultants to develop a 'Master Plan' for Efford. We are also pleased to report that with the help of Harry and Robert we will soon be developing our own HECP website. So, watch this space!

Ofcourse, none of this could happen without the support of local people and organisations. If you wish to get more involved please get in touch.

New Frail Elderly Scheme in Torridge Way – update...



Plans to build 40 flats for elderly residents and a new library on the current St Paul's Church site are progressing well. If planning consent is granted as anticipated on the 15th February then the Church and Church Hall will be demolished in late February/early March and construction of the new building will start in April. Public consultation and the planning process have prompted many questions including the following:

Why is the process of developing this project moving so quickly?

The scheme is supported by substantial grants from the Housing Corporation, Department of Health and the South West Regional Development Agency (RDA). A condition of providing these grants is that work starts on site by the end of this financial year i.e. by end of March 2006.

Does the new building need to be on four storeys?

A scheme of this nature that provides care and support to frail elderly residents needs to be of a minimum size so that extensive communal facilities can be provided. This includes a communal lounge and dining room, hobbies room, laundry, hairdressers and additional bathrooms for assisted bathing.

There will be a scheme manager and care staff available 24 hours a day. A 4 storey building is also preferred by the urban designers LDA who are looking at long term improvements to Torridge Way. The building will be of similar scale to other buildings in the street and it will help

reinforce Torridge Way as an important neighbourhood centre.

How will the scheme benefit the local community?

The scheme will include a new and up to date community library for Efford. Older residents with support needs who currently live in the area will gain priority when the flats are allocated. The residents will interact with the local community and some of the facilities in the building will be available for community use for example the dining room will be an ideal location for a Luncheon Club for older residents from throughout the Efford area.

Why are there only 11 parking spaces?

It is highly unlikely that any of the residents will drive and the parking that is provided is for the staff who will provide care & support to the residents. Sarsen Housing Association has another similar scheme in Stuart Road, Plymouth and none of the residents living at that scheme own a car.

Has the Housing Association properly considered the security of the boundary of the site during construction and when the building is occupied?

Building sites can be dangerous and a secure hoarding (solid barrier fencing) will be constructed around the site during the construction phase. The nature of the hoarding and other security issues are being discussed with the local Community Police Officer.

When the scheme is completed, it

is recognised that the current fencing around the site will be inadequate and new fencing will be provided along the rear boundary and a wall will be erected between the site and the communal area of the adjacent flats. The nature of these boundary structures will be discussed with the police as the scheme is expected to achieve accreditation under the 'Secured by Design' initiative. There will be a remotely controlled barrier to ensure that access to the rear car parking area is strictly controlled and to ensure the safe enjoyment of the gardens by the residents.

Will the trees along the rear boundary be retained to ensure the privacy of the properties in Welland Gardens?

The entire site is being reduced by over a metre to ensure that it is at the same level as pavement in Torridge Way providing easy access for elderly and disabled residents and visitors but some minor amendments have been made to the scheme to ensure that the trees along the rear boundary can be saved. There is also an extensive landscaping scheme being established as part of the overall new scheme.

When will the scheme be finished?

It is anticipated that the scheme will be completed and occupied before Christmas 2007.

*For any further information please contact David Luke, Partnership Development Manager, Sarsen Housing Association.
Tel: 01752 827730 or email david.luke@sarsen.co.uk*

A message from Highfield Community School

We are happy to continue with our work in supporting the regeneration of Efford and feel very much at the heart of the Community.

We are pleased to announce that St Paul's Church are moving in and that a new temporary community library will be available in our school when the existing Efford Lane library is closed down.

We would also like to reassure all the groups and organisations that used to meet within the old St Paul's Church Hall that we will do our best to accommodate your needs. Please contact Kath Hancock at the School on 01752 773187.



In-Touch Befriending – who are they and what they do?

In Touch Befriending is a Voluntary Organisation working at present under the Plymouth Diocesan Trust Charity No 213227.

In-Touch enriches the lives of older people living mainly in areas of Efford, Laira, Lipson and Compton, Plymouth. The project aims to do this in a variety of ways whatever an individual situation is, active or housebound. To improve the quality of life, general health and well being, reduce isolation and provide new and exciting interests.

In-Touch hold regular social activities - as advertised in quarterly newsletter mailed out to all members:

- Coffee mornings - around the area.
 - Open House - At present held twice monthly 11-3 as from Feb at Community Rooms, Highfield School, Torrridge Way. providing coffee, gentle exercise/dance, light nutritious lunches, exciting afternoon sessions in response to members requests.
 - One to One Befriending - Volunteers are trained and supported by co-ordinator to provide service to individuals in area that are often housebound.
 - Coach Outings - Visiting places of interest, new experiences, and aiming to reach places that are not accessible by public transport.
- In-Touch produce quarterly newsletter, available by request, which gives all details of where and when we meet.

If you wish to find out more please contact us on: Temp telephone No. 07970 406476 or write to us c/o St Pauls Vicarage, 1 Yeo Close, Efford, Plymouth PL3 6ER. Co-ordinator Bridget Jane Roberts



New Year, New You at Slimming World Group

The Slimming World group at Plym View Primary School in Blandford Road is opening its doors to everyone who's New Year's Resolution was to lose weight and

haven't quite got round to it yet.

Consultant Francesca (01752 250167) says 'Many people are nervous about joining a slimming club because they imagine it will be like the sitcoms and comedy sketches that they see on the television but Slimming World are

working hard to dispell these stereotypes. We guarantee no humiliation and members' weights are never revealed. I remember the first time I walked through the doors of Slimming World and I couldn't believe how different it was to what I had been imagining. It was so friendly and welcoming - by the end of the evening even the scales didn't seem so daunting.

Since joining as a member I haven't looked back and I've gone on to loose over 5 and a half stone and I can't believe the difference it's made to my life. I've enjoyed it so much that I decided to become a Slimming World Consultant and I've spent the last few months getting to know the group at Efford after taking

it over in October. The group was so welcoming in to me and I am immensely proud of the progress they've all made with their weight loss campaigns.

During February and March anyone who wants to come and find out more about Slimming World can pop in on a Wednesday evening at 6.30pm. There will absolutely no obligation to join but if you decide to join there are plenty of different special offers available during the month. For example, if 5 people join together on the same evening they get a half price joining fee and we are also encouraging families to join with special offers for weekly fees on family groups.

Efford Children's Centre

A Children's Centre is a place where children under the age of five can receive a range of services, information and help from a range of professionals.

The advantages of having a Children's Centre in your area is that it can provide long term community services which will be developed with the active involvement of parents/carers and the local community. It can provide services that suit local need and parental choice. It will be inclusive and accessible to all.

A Children's Centre must provide the following:

- Early years education and childcare

- Family Support and parental outreach
- Child and family health services
- Parental involvement and links with Jobcentre Plus

A Children's Centre will link with Extended Schools to offer a wide range of 'joined up' education, care, health and family support services for children aged 0-14 (16 with additional needs) and families.

Plymouth City Council is working with organisations setting up a Children's Centre stakeholder group for Efford. The group includes representatives from the Primary Care Trust (PCT), National Children's Home NCH), Local childcare providers, Local primary schools, Local residents, Jobcentre Plus and

Plymouth City Council.

The Children's Centre in Efford could offer you the following services:

- Parents/carers help with accessing training, work and advice
- Effective links with further and higher education institutions
- Basic skills and parenting classes
- Specialist services for disabled children
- Benefits advice, including maternity grant

But we want to know what services you would like your Children's Centre to provide?

Spring into action!

**Saturday 4th March
10am to 4pm**

Plymview
Primary
School,
Blandford
Road,
Efford

- Tell us what you would like to see in your Children's Centre
- Talk to staff from Plymouth City Council to find out more about Children's Centre's and how they will link with Extended Schools
- Come and see the plans for the Torridge Way development and talk to the staff from the Efford Team at Plymouth City Council

Come and have your say...Join in the process...Your opinions matter...Enjoy a day out with the family!

Activities for children include face painting, balloon modelling, baby signing workshop, competitions and much more!

For more information call Ali Dixon on 07800 946991



Efford Toddler Group's festive Christmas Party

On 22nd December 2005 the first ever Efford Toddler group's Christmas party was held at Playtots Childcare Centre Blandford Road.

It was a fabulous party and many local children attended with their Mum or Dad. The children loved the old-fashioned favourite games such as 'Pass the Parcel', the 'Farmer's in his Den' and 'Musical Bumps', and joined in with gusto!

The party fare disappeared in record time and the climax of the event was the personal visit from Santa with a present for every child.

The children sang some of their favourite songs including 'Twinkle, twinkle little star' and 'jingle bells'. Santa told the children he once got stuck up a chimney and they all laughed and sang him a song about that. At the end of the party, nobody wanted to go home, but with only two days left before Christmas day, it was not too long to wait for Santa to come again!

Competition winners!

Congratulations go to **Kiel Marsden** (pictured right) who won 1st prize in the HECP Community Festival Balloon Race. Kiel is pictured here receiving his prize of an MP3 player from James Carter, Property Manager, Plymouth & South West



Co-operative Society who kindly donated the prizes.

Congratulations also go to **Karrah Jones** (pictured left) who came 2nd and received a £20 WHSmith voucher.

Party Party Party!

Lots of festive fun was had at the Christmas party on 7th December 2005. Over 100 folk braved the winter weather to learn more about the HECP, the plans for the Extra Care Scheme and a new Church. Children got their faces painted, played on the bouncy castle and made Christmas cards and other festive craft.

There was a special visit from Santa whilst parents gave their feedback on the various plans and proposals.

Thanks to the Highfield Community School and all the hard work put in by staff to prepare for the event.



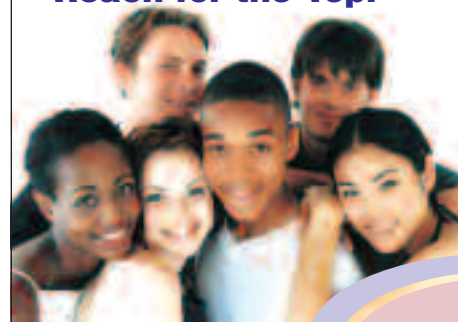
Youth Accreditation Support Service

Awards for young people in the Duke of Edinburgh Scheme, Plym/youth Award and UK Youth Achievement Award

Come along and see us at the G.K building Albert Street, The Hoe between 5.30 – 7pm on Thursdays. We can get you started and support you through an award of your choice.

Contact Efford Youth and Community Centre for more details Tel: 01752 776853

Reach for the Top!



March Diary Dates . . .

Date	Event	Time	Venue	Contact
Saturday 4th	Children's Centre Consultation	10am – 4pm	Plym View Primary	Ali Dixon 07800 946991
Monday 6th – Saturday 11th	Oliver Twist Local Primary Schools Production	7.30pm	Lipson Community College	Tickets from Wendy Holmes 01752 671318
Tuesday 7th	Basic ICT Training Sign-Up Day	9am – 10.30am	Highfield Community School	Kath Hancock 01752 773187
Thursday 16th	Last HECP Steering Group	6pm	Highfield Community School	Steve Payne 01752 785576
Tuesday 21st	DELL Forum	7pm	Venue TBC	Cllr Kerswall 01752 269472
Wednesday 29th	HECP elections	7pm – 8.30pm	Highfield Community School	Debbie Burton 01752 306521

Efford Youth and Community Centre, Blandford Road, Efford – Current programme of activities

Please contact the Centre for any further details on 01752 776853

Date	Activity	Time
Monday	Art drop in	9am-12 noon
Monday	Family & Parent Learning: Numeracy and Literacy	9.30 – 11.30am
Monday	Schools based Youth Work at Lipson Community College	12.30 – 2.30pm
Monday	Aki Escrima	6 – 9pm
Monday	Efford Youth Development Forum	5.30 – 7pm
Monday	Detached Youth Work and Sexual Health	7.15 – 8.45pm
Tuesday	Computer Courses	9.30 – 11.30am
Tuesday	Young Carers Club – Juniors	6 – 7.30pm
Tuesday	Young Carers Club – Seniors	7.30pm – 9pm
Tuesday	Detached Youth Work (Greenbank Freedom Park)	6 – 8pm
Wednesday	School based Youth Work	12.30 – 2.30pm
Wednesday	Junior Youth Club	5.30 – 7pm
Wednesday	Senior Drop-In	7.30 – 9pm
Thursday	Art Drop-In	9am – 12 noon
Thursday	Music Group	9am – 12 noon
Thursday	School based Youth Work Lipson	12.30 – 2.30pm
Thursday	Senior Citizens Club	12 noon – 4pm
Thursday	Senior Drop-In (Sexual Health)	6 – 8pm
Thursday	GK Building – Hoe - Accreditation	5.30 – 7pm
Friday	Basic Skills Numeracy and Literacy	9.30 – 11.30am
Friday	Football Training Meeting (once a month)	
Saturday	Dance Class for Children	10.30 – 11.30am

Contact Details

Efford Community Partnership

Steve Payne

Chair of Steering Group
Tel: 01752 785576
Email: SPayne55@aol.com



Michael Bridgwater

17 Welland Gardens
Efford
PL3 6EX
Tel: 01752 227309
Email: mb@effplym2.wanadoo.co.uk



Elected Ward Members

Cllr Brian Vincent

416 Blandford Road
Efford
PL3 6JB
Tel: 01752 316902
Email: brian.vincent@plymouth.gov.uk



Cllr Andy Kerswall

43 Thames Gardens
Efford
PL3 6HD
Tel: 01752 269472
Email: andy.kerswall@plymouth.gov.uk



Cllr Bernard Miller

'Buena Vista'
17 Efford Road
Efford
PL3 6NE
Tel: 01752 776452
Email: bernard.miller@plymouth.gov.uk



The Efford Team at Plymouth City Council

Peter Hopkins

Programmes and Project Manager
Tel: 01752 306535
Email: peter.hopkins@plymouth.gov.uk



Debbie Burton

Neighbourhood Regeneration Officer
Tel: 01752 306521
Email: debbie.burton@plymouth.gov.uk

