

Heart of Efford News

COMMUNITY PARTNERSHIP

Issue 4

July 2006

Supported by Plymouth City Council • Published on behalf of Efford Building Communities Initiative Steering Group

HECP Elections

Thanks to all those 150 residents who turned out on March 29th to vote for your Heart of Efford Community Partnership Committee. Thanks to all those who supported the event, especially Highfield Community School for hosting the election through until 8.30pm.

Let us introduce ourselves...



new roles and are looking at ways of making Efford a better place to live and work:

- We are encouraging the Consultants Shillam and Smith in their 'Master Planning' work now underway in Efford, *(please see separate feature)*
- We are putting in funding bids for our own HECP development workers
- We are organising another Summer Festival

(continued on page 2)

We can now introduce ourselves as YOUR Partnership Committee working on YOUR behalf. We are here to work with YOU and all those agencies and organisations who provide services to us as residents, to make things better for us in Efford.

You will be hearing from us very soon about events and activities where you will be invited along to express your views and concerns and to get more involved in our work. For now, we are all getting used to our



Inside this issue:

- New Efford Library provision
- Consultants Shillam and Smith get ready!
- Get on board with HECP 'Co-option'
- Committee trained in Lottery funding

Heart of Efford
Community Partnership

South West of England
Regional Development Agency

City of Plymouth



Flo Bond MBE

Described in the Evening Herald as "one of Britain's unsung heroes", Flo was made a Member of the Most Excellent Order of the British Empire (MBE) in the 2003 New Year Honours, for "tireless service to the children and staff of Highfield School".

A great-hearted Lady of Efford, whose own heart gave up on her on 12th May, our Flo was loved by generations of children, and will be sorely missed by all of us of every generation. Her "eternally cheerful presence" will always be remembered.

Flo Bond MBE
(Magnificent Blessing to Efford)

Let us introduce ourselves...



- **HECP Chairperson – Steve Payne**
Steve has been involved in the HECP Steering Group for many years and is also the local vicar of St Paul's Church. Steve has a very wide network of contacts in the Community and wants to continue his work to better residents' quality of life.



- **Vice Chair – Kath Hancock**
Kath has been involved in the HECP Steering Group and is a Severn Place resident who also works in Highfield Community School. As well as being a governor of Highfield Community School Kath is chairperson of Highfield Community Association.

Other Resident Committee Members:



- **Barry Lucas**
Barry has been a resident of Efford for the past 21 years and is involved with the Horse Shoe Residents Association. Barry has many city wide contacts and has a keen interest in health matters.



- **Cindy Jennings**
Cindy is a Torridge Way resident who has been actively involved with the HECP Steering Group. Cindy has many contacts in the community and is keen to work with young people to improve the area.



- **Maria Bunker**
Maria has lived in Efford all her life and has many contacts in the community. Maria has a keen interest in working with the community to challenge anti-social behaviour and improve things for young people.



- **Michael Bridgwater**
Michael brings a lot of committee experiences with him ranging from being the co-founder of Torridge Cross to being the Treasurer of DELL forum. Michael was active in the HECP Steering Group and lives close to the redevelopments on Torridge Way.



- **Fred Thorne**
Fred has been the Chairman of the Horse Shoe Residents Association and is actively involved with neighbourhood watch. Fred has a keen interest in housing management issues.

Service / Business Committee Members:

- **Rose Lee** from the Torridge Way Newsagent
- **Margaret Johns** from Efford Youth and Community Centre

Ward Councillor Members:



Councillor Claude Millar



Councillor Andy Kerswall



Councillor Brian Vincent

Extra Care Housing Development update

Sarsen Housing Association is expecting construction of the 40 flats for frail elderly and new community library on the site of the former St Pauls church to commence on 12th June.

After the rush to secure planning approval and demolish the Church by the end of March to secure funding for the project care has been taken when finalising the specification to ensure that the building is of the highest quality setting the standard for other new developments in Torridge Way. Any queries or concerns should be directed to David Luke of Sarsen on 01752 827730.



Effords new temporary library provision at Highfield School



Anne Power, Community Librarian, (pictured opposite) welcomes residents to the new temporary library provision at Highfield Community School, Torrridge Way. The new library entrance is located to the left of the main entrance of the school and can be accessed via the main school gates (accessible route) or via newly refurbished steps to the left of the school.

As you are probably aware the old library building will soon be demolished to make way for a new St Pauls Church. This is part of the redevelopments along Torrridge Way that will see an Extra Care Housing Scheme being built which will have a new community library facility within it.

For now, the temporary library has been set up whilst building developments progress on Torrridge



Way. Library staff have worked hard to assist with the move from the old library building in Efford Lane and staff at Highfield have generously given up their staff room to make space for the library. Anne and the library staff opened it's doors for the first time on Monday 8th May and are happy to say that it's business as usual.

Library opening hours:

- Monday 1pm – 7pm
- Tuesday 9am – 5.30pm
- Wednesday 9am – 1pm
- Thursday 9am – 5.30pm
- Friday 1pm – 7.00pm
- Saturday 9am – 1pm

In-Touch Befriending Scheme

In Touch Befriending is a local voluntary organisation whose aim is to enrich the lives of older people in Efford, Laira, Lipson and Compton. Its office is now based in Highfield School Community Rooms where it hosts its twice monthly Tuesday 'Drop In' called Open House.

Open House meets from 11am-3pm on the 1st and 3rd Tuesdays of each month. Members begin the

day with gentle dance and exercise followed by a light lunch. In the afternoon a variety of activities are held ranging from cookery demonstrations to poetry and music presentations. These days are open to all older people who live in the area. The project aims to be directed in its programme planning by its members.

It will be meeting on June 6th &

20th, July 11th & 25th, Aug 8th & 25th over the summer months.

Alongside the Open House activities in the Highfield Community Rooms, coffee mornings are held regularly for its members at a number of venues around the area.

More details about any of these activities can be obtained from the co-ordinator: Bridget Roberts Telephone 01752 770153

- **Why not tell us about your local community group?**
- **Would you like to promote any local groups or activities?**
- **If so, get in touch with Debbie Burton on 306521**



A fun consultation

An artist's impression of 'the square', a daytime consultation space, a café and a drop-in centre focused on the housing office in Torrington Way. We want to encourage as many different people as possible to come and talk to us, and to find the process enjoyable and stimulating.

Work for us

Help us to consult with the people of Efford.

Shillam + Smith are opening a 'consultation shop' on Torrington Way in July. We are looking for two people to work in the shop through the summer, and possibly longer. Duties will include serving tea, coffee and juices to visitors, assisting with questionnaires and setting up exhibitions.

This is a chance to get involved and learn new skills. Training will be provided

- Basic 8 hours per week on two mornings, extra hours may be available to assist with further consultation and research
- A knowledge of the community of Efford would be an advantage
- Ability to get on with members of the public is essential
- Local Authority pay rates

Please call Alexandra on 020 7637 6744 for more information as soon as possible.

Shillam + Smith are an equal opportunities employer.

Dear People of Efford

Shillam + Smith Architecture and Urbanism have been awarded the commission to masterplan the neighbourhood of Efford focussed on Torridge Way. We will be working with the whole of the community and the new Heart of Efford Community Partnership to formulate a masterplan that will focus on creating a sustainable community. Our client, Plymouth City Council, has requested that we find proposals that will:

- improve employment
- raise skills
- promote entrepreneurship
- provide better transport and use of land
- improve community safety and health
- encourage sport and games

Ultimately we want to work towards making positive changes in Efford, by creating vibrant and high quality spaces, and by engaging the community in the process.

We want to listen to as many in the community as possible to understand your needs and desires for your

neighbourhood. We have already completed a very thorough survey of the area. From June we will begin an interesting programme of consultation, based in Torridge Way. Even before we were appointed we discovered that there is no place in the area for people to meet – no café or village square where people could gather. So our public consultation will revolve around a temporary café (see artist's impression) and new external exhibition space. There we hope people will be encouraged to congregate and talk to us. We are also planning to involve artists who will help us at this stage and then go on to assist with new projects.

Once we have talked to as many as possible, we will be producing options focused on the changes already proposed for Torridge Way. These ideas will be presented to the community for their comments. Once we have your comments we will be formulating our proposals and looking for improvements that could start immediately.

We are working with a strong team of consultants. These include regeneration economists, Dearle and Henderson and training and skills consultants CSC. Plymouth Public Health Development Unit will be looking at measures to improve health and wellbeing in the area. The project is being funded by the South West of England Regional Development Agency, and the work is expected to run until March 2007.

We are excited about the project and look forward to the public consultation process in Efford.

Best wishes

Wendy Shillam
Project Director
Shillam + Smith
ARCHITECTURE AND URBANISM
122 Great Titchfield Street
London W1W 6ST
T +44 020 7637 0057
E wendy.shillam@urbaneye.co.uk
W www.urbaneye.co.uk

Our Team



Wendy Shillam
Shillam+Smith
Architecture and
Urbanism



Martin Probst
Shillam+Smith
Architecture and
Urbanism



Andy Perry
CSC



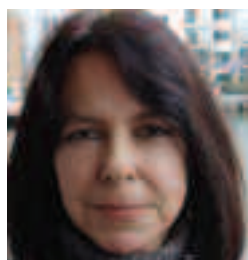
Debbie Burton
Plymouth City
Council



Darren Kaley
Dearle and
Henderson



Jay Sundaesan
Shillam+Smith
Architecture and
Urbanism



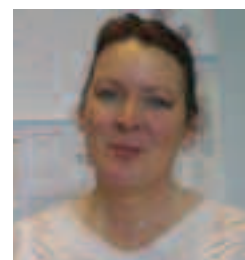
Sandra Crouch
CSC



Steve Spicer
CSC



Peter Hopkins
Plymouth City
Council



Denise Rudgley
PHDU

Heart of Efford Community Partnership 'Co-Option' Opportunity

The Heart of Efford Community Partnership is made up of the whole community – all who live or work in Efford are full voting members of the Partnership. These members elected a committee to represent them – 8 resident members and 2 local business and service representatives. Ward Councillors also sit on the Committee.

There are also up to 6 spaces for 'co-optee' members. These will not have voting rights, as we want to ensure that local residents always out-weigh other members of the

committee. Co-optee members will be people who we would like to see involved and influence our committee decisions but not necessarily live here.

We would like to include, for example, representatives from local schools. Highfield Community School and the Torridge Way area are fairly well represented on the Committee so we are especially keen for anyone linked to Plym View School, Lipson Community College or other residents from the bottom of Blandford Road area to get in touch to find out more.

Criteria

- Co-optee members DO NOT have to live in the Efford area
- Must be able to commit to the time required to attend meetings
- Must be able to promote the work of the HECP throughout the Efford community
- Must be willing to undertake a commitment to work within the framework of the constitution

If you are interested or want to find out more please call Debbie Burton on 01752 306521 or speak to any other committee member.

Committee Members trained in Lottery Funding

Congratulations go to Kath Hancock and Cindy Jennings, pictured here, from the HECP Committee who recently gained a certificate from the BIG Lottery Fund for their attendance on a training event.

The day was hosted by the Directory of Social Change and included sessions on how to access lottery funding for their group. They hope to use their new skills to bring in some funding for the HECP to deliver some 'outreach' work with the community.



Sweet Music enjoyed at Plym View

During May we hosted a concert by the Plymouth Youth Band – and what a concert it was! In a brilliant display of virtuosity the band played a sparkling selection of favourites from shows and movies with some jazz, classical, 'old time' and 'pop' – something for everyone. The theatre lighting added drama to an already electric atmosphere and with the tiered seating, everyone was assured of an unobstructed view.

The concert was one of a number of events designed to bring the community into the school. Some of you may have been involved in the hugely successful 'United We Stand' event (some

DVDs still available!), which saw local senior citizens putting on a 'Tea Dance' and being interviewed by the children. It was a wonderful event, bringing together the community and the school, old and young.

We are very keen at Plym View to continue to find ways to connect with other individuals and groups in the area. Our new entrance **meeting room** is being used by local groups looking for a pleasant, modern place to get together, deliver training and so on. The newly refurbished **sports hall** is also used by local sports and health groups.

The **Rehearsal and Performance space**, which has a sprung floor for

dance, etc. is used by a well-known local dance group and other groups have expressed an interest. As well as housing the Plymouth Youth Orchestra and Plymouth Youth Band, DCMA will also be operating a Toy Library from the school by September. This is like a book library, only you can borrow toys, including some very large toys that you might like to have for a special occasion but might not want the expense of buying – great idea!

Like the Toy Library our **breakfast, after school and holiday clubs** are intended for **anyone in the area to use**, not just for pupils at Plym View.

Business Adventure Competition 2006 – Local Champions

Last month a team of eight Lipson Community College enterprise students and their Business Advisor Paul Clark competed at Eden. After five months of planning the day had arrived for HAND HUGZ to go in front of the Dragons Den.

Eight teams from across Cornwall and South Devon had been awarded £250 to start up their own business and to show entrepreneurial skills. The students set up their display and were then asked to pitch their business concept to five judges, all of whom came from high profile businesses in the South West, as well as all the other teams. The team was then bombarded with questions from the audience and the

judges which they answered well and were never fazed.

The competition ran all day and the judges walked around the display areas and discussed the work that had been going on, judging all the time. Once all the presentations were complete there was a challenge which was set to see how well the team worked together. Once again the Hand Hugz team put up a fantastic display making the most money. The judges left to deliberate and returned

to deliver the verdict.

Lipson had won the Business Adventure Competition 2006 - the first year it has run. The students were amazing, true professionals. Mohamed, Diogo, Zehira, Duncan, Chelsey, Lyndsey, Hayley and Mark were then whisked away for a TV interview and interviews for Devon Radio and Plymouth Sound. These students have put a great deal of effort into this project and I would like to thank all those staff who supported them in their work, Nigel Rowe for his sponsorship and Paul Clark for his advice and support. This team intend to continue to fulfil all their orders and enter next year's Young Enterprise competition.



Hat scarf, the best of both worlds

Hand Hugz



A hug for your hands on any occasion



Hand warmer

Watch this space... Thanks to Harry and Robert we will soon be on-line and virtual! We are in the process of buying some web space and hope to be live soon at...www.hecp.org.uk

Health Matters

'We are listening to you' says Denise and Andy from the Plymouth Public Health Development Unit

The public health team for Efford, Denise Rudgley and Andy Pratt will be meeting as many residents as possible over the next few weeks to get your views about your health, the services that you use, what services may be missing and what can be done to most improve your health and well being. This will include

visiting local groups and also speaking with some of the people who already provide some services. We will be working closely with the Heart of Efford Community Partnership and with everyone involved with the exciting development for Torridge Way. You are the local experts and we look

forward to hearing what you have to say.

Please contact Andy or Denise at the Public Health Development Unit on 01752 515470 or email Andrew.pratt@phdu.nhs.uk or denise.rudgley@phdu.nhs.uk.

Changes in Torridge Way

... the day that went down in Efford's history (March 1st 2006)



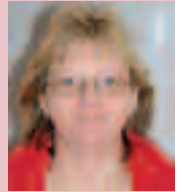
Contact Details

Efford Community Partnership

Steve Payne
Chair of HECP
Tel: 01752 785576
Email: SPayne55@aol.com



Kath Hancock
Vice Chair of HECP
Tel: 01752 773187



Elected Ward Members

Cllr Bernard Miller
'Buena Vista'
17 Efford Road
Efford
PL3 6NE
Tel: 01752 776452
Email: bernard.miller@plymouth.gov.uk



Cllr Andy Kerswall
43 Thames Gardens
Efford
PL3 6HD
Tel: 01752 269472
Email: andy.kerswall@plymouth.gov.uk



Cllr Brian Vincent
416 Blandford Road
Efford
PL3 6JB
Tel: 01752 316902
Email: brian.vincent@plymouth.gov.uk



The Efford Team at Plymouth City Council

Peter Hopkins
Programmes and Project Manager
Tel: 01752 306535
Email: peter.hopkins@plymouth.gov.uk



Debbie Burton
Neighbourhood Regeneration Officer
Tel: 01752 306521
Email: debbie.burton@plymouth.gov.uk

