

Heart of Efford News

COMMUNITY PARTNERSHIP

Issue 8

June 2007

Supported by Plymouth City Council • Published on behalf of the Heart of Efford Community Partnership

Get online with the HECP

Our 'Web Master' Harry, who is also a local Efford Resident, writes about the HECP website and how he got involved:

'In the first edition of the Efford News I read that the HECP were keen to get an online presence, so they asked if any Efford Residents would like to produce a website. As I was running my own personal website for over a year I put myself forward for the job. Another resident also came forward, Robert Turner. We both met with the Council's Regeneration Team and some Committee members to discuss further. Robert has not taken part in the putting together of the website, but was a good source of information on *Dreamweaver*, which is the computer programme I now use to make and publish the site, so 'thank you Rob'.

The website is now a good few months old and I am pleased to say that it is starting to look nice. I am



happy that it is easy on the eye and simple to navigate; its purpose, of course, is to keep the Efford Community up to date with the goings on off the regeneration work. This is achieved through Debbie Burton from the Council Regeneration Team who sends me regular email updates that I then publish online. Much of the website has come straight from myself and ideas passed to me from other local residents.

Why not check it out? Visit www.hecp.org.uk

'The site has had about 650 hits so far, in terms of websites that is very low; I would like to say that this article will hopefully improve the number of visitors that arrive on our homepage. I try to keep it fresh so people will return to read the updated information

and photographs. Don't be afraid to be interactive (we need your views).

From the website you can do a number of things:

- Keep updated with changes happening in Efford and Efford news
- Simply browse
- Contact the HECP or other agencies
- Read minutes of the last HECP meetings
- Send us photographs
- Download HECP newsletters
- Post messages in the Guest book

There are links to send emails directly to myself, if you have any views or ideas I would love to hear your thoughts.



Preparing a personal website I found easy, preparing a site for other people to use as a service I have found, a little more daunting, but nevertheless with the help of Debbie Burton and some adult education classes in Dreamweaver, (funded by Plymouth City Council and the South West Regional Development Agency) I think I have made a reasonable job'.

Inside this issue:

- New HECP Committee members
- New 'What's on in Efford!' calendar
- St Paul's Church ground breaking ceremony
- Efford schools amalgamation

Welcome to our new HECP Committee members:

We are pleased to announced that following our recent election campaign and AGM our Committee Membership has slightly changed and we welcome a couple of new Members to the Committee.

Julie Bertram who lives in Severn Place, runs her own business and has recently moved into the area. Julie feels she was made really welcome moving to Efford and is enthusiastic about working in Partnership to make Efford a better place.

Debbie Roberts lives in Blandford Road, is an active member of the Parents Association at Plym View Primary School and works on Torridge Way. Debbie knows Efford very well and wants to get involved in making a difference.

Remember EVERYONE who lives or works in Efford is automatically a Heart of Efford Community

HECP Committee Members:

Residents

- Steve Payne (Chair)
- Kath Hancock (Vice Chair)
- Barry Lucas (Treasurer)
- Caroline Jones (Secretary)
- Fred Thorne
- Mike Bridgwater
- Mike Woods
- Debbie Roberts

Local Services/Business

- Julie Bertram
- Wendy Brown (Efford Youth and Community Centre)

Councillor Members

- Cllr Brian Vincent
- Cllr Andy Kerswell
- Cllr Claude Miller

Co-optee Members

- Paul Boyes (Lipson Community College)
- Laurie Doyle (Plym View Primary)
- Kim Dorien-Kemp (Highfield Community School)
- Ernie Edgcumbe (DELL Children's Centre)
- Efford Youth Development Forum (EYDF)

Partnership Member – we all need to work in Partnership to make Efford a better place to live. The Committee (above) work on your behalf to develop initiatives and work with Partners to bring about positive change.

There are other ways of getting

involved, other than sitting on the Committee. If you feel like you want to know more or get involved in any way you can, please contact us, or our Council Regeneration Officer, Debbie Burton (*contact details can be found on the back page of this newsletter*).

A New St Paul's Church for Efford (Church of England)

Ground Breaking Ceremony

On Thursday 19th April a service led by the Rev Steve Payne was held on the site of the old Efford Library in Efford Lane to dedicate the land on which the new St.Pauls Church and Community Hall will be built.

Following the short ceremony attended by the Deputy Lord Mayor, representatives of the local community and members of St Paul's enjoyed some light refreshments at Highfield Community School where plans for the new church and community hall were on display.

At the service the Rev Steve Payne spoke of how St Paul's Church, since its early beginnings on the estate, has aimed to serve the local community by providing a place for worship and

for community use.

The building work started on April 23rd and will be completed by Christmas.



Rev Steve Payne and Deputy Lord Mayor and representatives of the local community.

The Gym Project

We have started a gym project because there are too many bored young people getting into trouble, so we have put together a gym for young people. But because we are under the age of 16 we cannot use all the equipment. We have spoken to someone from the YMCA and he told us what equipment we can use. We are doing an eight week trial so we can see whether it will go well and if it does we will apply for funding to make it permanent.

In this project we will be making smoothies and be making a book on our favourite recipes, we will also be doing a book on tips for young people for staying healthy. A big thank you to the YMCA and Denise Rudgeley for supporting this project.

Yoga project

The forum want to do a yoga project for girls and mums so we can work together. We have spoken to Denise Rudgeley who is going to support this project for us. It looks possible that this project will start June (still waiting to be confirmed).

Multi Court

We are looking at replacing the basketball court on the Youth Centre site, with an up to date one. We are currently looking at funding for this, which will cost £60.000, we have decided on one that we all like and if anyone would like to see the plans

they are being displayed at the centre.

Youth Shelter

We are now able to confirm the site for the possible youth shelter is on Efford Youth And Community site .We have just heard that we are through to the next stage of funding (hooray). This may stop trouble on the streets also we will have a place to go, and will stop kids getting bored and stop under age smoking. This will stop young people from drinking on the streets. This will be a safe place that kids can go to have fun and chill out. The plans for this are also being displayed at the centre if anyone would like to see them.

Chill Out Room

We have completed the room and just awaiting the delivery of the settee, tv. We are going to be using the room now with the beanbags etc, and we have done a really good job. We are still doing the artwork to display on the walls, we have some budding Van Goughs ha ha.

Assemblies

We have done two assemblies at Lipson Community College to talk to the students who live in Efford, this was our first presentation and we were very nervous but we did a good



job. We introduced ourselves and what our role is, we had a good response and students have already approached us about their ideas, we are hoping to have a suggestion box in the school for students to put forward ideas.

Arts and crafts

A big thank you to those who kindly donated arts and crafts materials, it was very kind of you and has helped us get things off to a good start.

By Kim King

Efford Youth Development Forum

If you are aged between 13-19 and are interested in becoming a forum member or if you have any thoughts or opinions on how to make Efford a better place for young people, please come and see us at the Efford Youth And Community Centre on Monday evenings between 6pm and 8pm.

Highfield Community Association

You may well not have heard of us – but we've been operating for eight years now, in three former classrooms at the back of Highfield Community School.

We are separate from the school, providing support and activities for all ages – ranging from the Bright Sparks Nursery, and Toddler Group, 'Whizz Art' and 'Learn About Computers' (we have our own computer suite) letting children and adults learn new skills

together, to the free Breakfast Club in term time, and lunches for Senior Citizens every fortnight.

Being self-contained, bright, attractive and welcoming, and with a small kitchen, the rooms are hired for a variety of meetings and training opportunities, as well as social functions. We'd be delighted if you wanted to come and use them too – for your parties, meetings, or any other activities for the community.

These rooms are here to be used by you.

The Association is a registered charity, run for the benefit of the people of Efford, and has attracted considerable funding to develop its activities. If you would like to know more about us, or would like to use the rooms, please let Kath Hancock, Betty Insley or Highfield School know and we'll get back to you.

What's on in Efford!

This is the first weekly activity programme we've published and no doubt we've missed things out. If there is anything you would like to add email debbie.burton@plymouth.gov.uk and we'll get it into the next issue.

Monday					
Activity	Time	Price	Who for	Venue	Contact
Flo's Little Star's Parent and Toddler Group	9.30-11.30am	£1	Parents and children 0-5	Highfield Community School	Ann-Marie Jennings 07891 245974
Art drop in	9am-12pm	75p	Adults	Efford Community Centre	Margaret Johns 01752 776853
Music With Mummy	9.45-10.15am	£3.50	0-3yrs and their parent	Lipson (address call Carline)	Caroline 01752 663236
Aki-Escrima (Martial Arts)	6-7pm children 7.30-9pm adults	Call for details	Children and adults	Efford Community Centre	John 01752 783925
Youth Forum	6-8pm	Free	All Young People	Efford Community Centre	Margaret 01752 776853
Rainbows	5:30-6:30pm	Call for details	Girls 5-7	Laira United Church	Ange Chudley 01752 225020
Brownies	6-7:30pm	Call for details	Girls 7-10	Laira United Church	Ange Chudley 01752 225020
Girl Guides	7-9pm	Call for details	Girls 10-16	Laira United Church	Ange Chudley 01752 225020
Tuesday					
Young Carers Group	6-7:30pm Juniors 7:30-9pm Seniors	£1	Young Carer's (referral only)	Efford Community Centre	Margaret Johns 01752 776853
Greenbank Detached Youth Work	6-8pm	Free	Young People 8-18yrs	Freedom Park	Margaret Johns 01752 776853
Parent and Toddlers	9.30-11.30am	£1	Parents and 0-5yrs	Playtots Foyer	DELL 01752 306334
Baby Weighing	9.30-11.30am	Free	Parents 0-5yrs	Playtots Foyer	Sandra Fuller 01752 314283
Girls Brigade	6-8pm	Call for details	Girls 5-18yrs	Laira United Church	Liz Pellow 01752 671771
Wednesday					
Step by Step Together Group	Mornings	Free	Families with children 0-3yrs with any form of additional need.	Play Tots Foyer, Plym View Primary School	Karen Pearce 01752 314411
Flo's Little Star's Parent and Toddler Group	9.30-11.30am	£1	Parents and children 0-5	Highfield Community School	Ann-Marie Jennings 07891 245974
Baby and You	2-3pm	Free	All first time parents	Play Tots	DELL 01752 306334
Boys Brigade	6pm	Call for details	Boys 5-18yrs	Laira United Church	Alec Lynn 01752 310665
Senior Youth Club	7-9pm	30p	12-18yrs	Efford Community Centre	Margaret Johns 01752 776853
Adult Music Group	9am-12pm	50p	Adults who play an instrument, guitars etc	Efford Community Centre	Margaret Johns 01752 776853
Badminton Club	8-10pm		14 years and above	Laira United Church	01752 225020

Diary Dates . . .

- June 21st – DELL Children's Centre Parent Development Group
- July 4th – HCEP General Meeting
- July 7th – Every Child Matters DELL Children's Centre - Community Fun Day at Plym View Primary

What's on in Efford!

This is the first weekly activity programme we've published and no doubt we've missed things out. If there is anything you would like to add email debbie.burton@plymouth.gov.uk and we'll get it into the next issue.

Thursday					
Activity	Time	Price	Who for	Venue	Contact
Detached Youth Work	6:30-9:30pm	Free	8-18yrs	Efford	Margaret Johns 01752 776853
Parent and Toddlers	9.30-11.30am	£1	Parents and 0-5yrs	Playtots Foyer	DELL 01752 306334
Baby Weighing	9.30-11.30am	Free	Parents 0-5yrs	Playtots Foyer	Sandra Fuller 01752 314283
Midweek Communion	10am	Free	Everyone	St Pauls Church, Hurrell Court	Steve Payne
Over 55's lunch	Last Thursday of every month	Free	Over 55's	Efford Christian Fellowship Church	Stuart Dan 01752 767711
Aikido	Evening classes	Call for details	Children and adults	Laira United Church	01752 225020
Friday					
Rhyme Time for babies and toddlers	First Friday of the month 2:15-2:45pm	Free	Parents/ Carers with babies and toddlers	Efford Library, Highfield Community School	Ann Power 01752 308985
Junior Youth Club	6.30-7.45pm	Free	School years 1-6	Efford Christian Fellowship Church, Torridge Way	Stuart Dan to be placed on the waiting list 01752 767711
Senior Youth Club	8-9.30pm	Free	School years 7+	Efford Christian Fellowship Church, Torridge Way	Stuart Dan to be placed on the waiting list 01752 767711
Dance Class	4-5.45pm	Call for details	3-13 years	Laira United Church	Awaiting contact details
Saturday					
Dance	10:30-11:30am	Call for details	All children and young people	Efford Community Centre	Caroline Maddock 01752 776853
Sunday					
Sunday Service	10am	Free	Everyone	St Pauls Church, Highfield School Temporary Chapel	Steve Payne
Miscellaneous					
Plym View Primary Wake and Shake	Every Morning Mon-Fri term time	Free	Plym View pupils and parents only	Plym View Primary School	Mrs Anker 01752 772984
School based Parent Partner	On request	Free	For families with children 0-19	Plym View Primary School	Alison Casey 07917 226346
Health Visitor Clinic	2 clinics per week	Free and open access	For families with children 0-5	Play Tots, Plym View Primary School	Sandra Fuller 01752 314283
Plym View Toy Library	Tues and Thurs 2:30-4:30pm, First Saturday of month	£26 per year to borrow 6 toys per month	Everyone welcome	Plym View Primary School	01752 202059
Efford Library	Call for details	Free	Everyone to borrow books and use internet	Highfield Community School	01752 308985
Laira Library	Call for details	Free	Everyone to borrow books and use internet	240 Old Laira Road	Ann Power 01752 308985 or 665737

Protect your family from tobacco smoke

Join the Smoke Free Homes Award Scheme. This involves signing up to making part or all your home smoke free for yourself, children and your visitors. Smoke Free Homes is about helping and supporting adults to alter their smoking habits around children and young people in the home and giving youngsters the best possible start in life and your pets too!

This is because nearly half of children in UK homes are inhaling second hand smoke. Second-hand smoke can cause worsening of asthma, chest infections, middle ear infections in children and increased risk of meningitis and cot death. There is also a higher incidence of behavioural and learning difficulties in children. In adults second-hand smoke increases risk of heart disease by 25 per cent, it leads to lung cancer and worsening of asthma and bronchitis.

So why not make your home smoke free to avoid these risks to your family?

Make a worthwhile promise to your Family

You can sign up to any promise level and progress through each stage if wanted.

- **By signing up to the Bronze Promise** – you promise not to smoke in front of children.
- **For the Silver Promise** – you promise not to smoke in front of children and in one room of the house only.
- **But by far the best you can do for yourself and others is to sign up for the Gold Promise** – not to smoke in front of children and not in the house at all.

The same applies to everyone who visits your house.

You could also win £250 worth of DIY vouchers in the prize draw if you are one of four lucky families who keep their Gold promise for 6 months.



Who knows you may decide to stop smoking after keeping your house smoke free. **Call your local Stop Smoking Service on 0845 155 8080 for further details** or you can talk to your School nurse, Midwife, Health visitor or Community worker (Dell Children's Centre) about keeping your home smoke free.

Plymouth **NHS**

Teaching Primary Care Trust
Public Health Development Unit

HECP AGM

Thanks to everyone who turned out to our HECP AGM. This meeting will take place every year and it is a time to look back and celebrate the last year and to look forward to the year ahead. An election process took place and resulted in some changes to the Committee (see separate article) but residents were invited to attend to hear about our work.

Residents were able to view information exhibited from the Efford Youth Development Forum (EYDF), St Pauls Court Extra Care Scheme, Efford Book Bar, DELL Children's Centre, the Proposed New School, New St Paul's Church, the Efford Master Plan and the HECP.

Steve Payne addressed the meeting and gave a run down of all



the projects that the HECP have been involved in over the last year, ranging from working with the Master Planners, commissioning Artists, attending seminars, working with the EYDF, running the 'Purple Pod', accessing training and much much more. Steve thanked all who have been involved, including past Committee Members and Partners

Heart of Efford
Community Partnership



who support the work of the HECP and encouraged residents to look ahead to more positive change in Efford.

Funding news... Funding news... Funding news...

The HECP recently submitted a BIG Lottery first stage proposal to gain funding to support them to engage with the Efford Community and to develop projects that will have a positive affect on local people. The proposal will bring funds to employ

our very own Partnership Facilitator and Outreach worker for five years to assist with our development and work with residents to improve Efford.

This project is being developed in partnership with the Council and Plymouth Arts Centre. The first stage

proposal was accepted by BIG Lottery and we have been invited to submit a further second stage bid. Good Luck to the HECP!



Efford schools amalgamation?

The Council's formal proposal

Most of you will be aware that both Highfield Community School and Plym View Primary School in Efford have been involved with Plymouth City Council's Children's Services Department in consulting with Parents, Governors, Staff, Pupils, HECP and the wider Community over the future of both Schools.

A public notice was published on the 4th May 2007 setting out the Council's formal proposal, based on feedback from a statutory consultation process, 'to amalgamate Highfield and Plym View Primary Schools in a new community school on, or within 250 metres of, the Highfield School site in September 2010'.

Why is a new school needed?

Highfield and Plym View Primary Schools both serve Efford well, but their buildings are on the whole outdated, there is too much surplus capacity and they are generally in poor condition. Both schools currently maintain these poor facilities with funds that could be better spent on teaching and learning.

The Council believes that the local community would be better served by providing a new school and building that school on a new site means there would be no disruption to the two existing schools during construction.

A great opportunity

A big capital investment in the neighbourhood would present an ideal opportunity to maximise the benefits of a new primary school with 'extended' services for children, parents and the local community, and would provide facilities that the local community could be proud of.

A brand new state-of-the-art Primary School with 'Extended Services' would contribute to the regeneration of Efford providing an Extended aspect for services to reach out to the Community. For example, it will provide Nursery and 'wrap-around' childcare, health/social care drop-in opportunities and could possibly incorporate a Community 'hub' e.g. a Community Gym or Community Café.

What would a new School bring?

Improvements in the quality of teaching and learning through a rich and stimulating curriculum relevant to Children's needs;

- Vast improvements to the teaching and learning environment in a modern school fit for the 21st Century
- Fully accessible facilities for both children and adults with disabilities
- A healthier, safer and more secure environment for Children, Staff and others

- A clear focus for the neighbourhood as a whole, uniting the local community
- A significant contribution to the regeneration of Efford
- Easier access to better sports, arts and educational facilities during and outside normal school hours and in the school holidays, as well as to other local services the community need
- Community access to educational facilities for 50 weeks a year, before and after school and during school holidays.

More information available

The proposal to amalgamate the two schools is at an early stage, there are still lots to consider in developing the brief for a new Efford School and discussion is taking place between the Schools, Governors, Parents, the Council and the HECP. It is important to get your voice heard, so please feed your views through to the Schools, or to the Council or through the HECP.

If you have any concerns, queries or require any further information, please do not hesitate to contact the Children's Services Department on 01752 307453. Further information can also be found on Plymouth City Council's website at www.plymouth.gov.uk/effordprimary.

An update to the building works on Torridge way

As works progress, construction works enter in to their 12th month. The project remains on programme and the target completion date is still scheduled for November 2007. As can be seen from looking at the building, the structural works are complete and the building has now taken its final shape. The bricklayers and concrete slab contractors have left site and the finishing trades to the external and internal areas have taken over.

A major event during the month of March was the removal of the tower crane. The crane was very useful while the building was being erected, but now that the roof is on, materials are being distributed by a telescopic

forklift and loading bays at the car park end of the building.

As the roof is nearing completion, the inside of the building is now watertight meaning that the fitting out of the flats can get underway. The plastering and plasterboard partitions have progressed, along with carpentry works, electrical works, and internal drainage.

To the outside of the building, all the windows have been installed, and the facade cladding works are well underway. The render and the timber cladding are being progressed around the building, and when the external elevations are complete, the scaffold will be able to be removed during May and June. This will take

around a month to do as there are over 6000 scaffold boards that need to be stripped and removed from site!

Over the next few months the works inside the building will move on to decorating and finishing the flats, and we will also concentrate on completing the landscaped areas around the building ready for the project handover.

As a final note, we would like to re-enforce the fact that construction sites are inherently dangerous places, and we would ask that the local community continue to help us to prevent unauthorised access to the site.

Andrew Nixon
Project Manager Kier

Efford 'Skills Swap Shop' – Skills Database

Ideas corner

It is true to say that everyone has a skill or a talent. Conversely, it is also true that there are jobs that people can not do to save their lives. So how about starting a skills/knowledge database where skilled people can register and if anyone needs their talents a barter system can be arranged? For example, Mrs Smith will mend Mr Brown's curtains and in return Mr Brown (who is an expert gardener) will sort our Mrs Smith's jungle. Is this a good idea – let us know!

Tidy Efford Campaign

How about running a best Efford Garden competition. Many Efford residents take a great deal of pride in making their gardens look special. A prize could be arranged and a winner picked.

Likewise, how about a clean up Efford campaign, take pictures of the worst aspects of Efford, e.g. graffiti, litter, whatever and invite comments. This could be posted on our website. We could then arrange a clean-up Efford Park day in the Summer with the Council Parks Department alongside some fun day activities for the kids.

Some ideas – but we need you to get involved. If you think these are good ideas let us know! If there are any willing residents wanting to contribute to making a difference to your neighbourhood – let us know!

Get in touch with Julie Bertram, email juliebertram@blueyonder.co.uk or Debbie Burton on 01752 306521 or email debbie.burton@plymouth.gov.uk.

Similarly if there are any other ideas please forward them to us!



New Timber Trail at Plym View

Plym View are happy to announce, thanks to an HECP Quick Wins grant, that a new Timber Trail for Children will be installed at the back of Plym View. This will be publicly accessible and installation is due to take place 20th-22nd June.

Efford Green Space Strategy WALKABOUT

This event is being organised by the Council and will be led by the HECP and the EYDF. Residents, Young People and Council Officers need to work together to look at the green space areas in Efford that need improving or could be developed into activity space – e.g. Youth Space, Play Parks, Gardening Schemes. The event is being organised to take place on a Monday July 2nd, starting at 6pm from Efford Youth Centre. Log on to www.hecp.org.uk or look out for more publicity in the community.

Efford Library and Book Bar

Staff at Efford Library are looking forward to a brand new library opening in the new extra care scheme in Torridge Way. Due to open in November, this will feature a young persons 'Bookbar'. Watch this space for events and activities.

Meanwhile we have our regular Rhymetime at Efford Library on the first Friday of the month from 2.15 - 2.45pm – stories and rhymes for under 5s.

We have started a very successful Rhymetime at Laira Library – every Wednesday morning from 10.30-11.00am – stories and rhymes for under 5s.

Watch this space for more information about our BIG WILD READ - our SUMMER READING SCHEME with lots of activities.



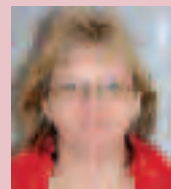
Contact Details

Efford Community Partnership

Steve Payne
Chair of HECP
Tel: 01752 785576
Email: SPayne55@aol.com



Kath Hancock
Vice Chair of HECP
Tel: 01752 773187



Elected Ward Members

Cllr Bernard Miller
'Buena Vista'
17 Efford Road
Efford
PL3 6NE
Tel: 01752 776452
Email: bernard.miller@plymouth.gov.uk



Cllr Andy Kerswell
43 Thames Gardens
Efford
PL3 6HD
Tel: 01752 269472
Email: andy.kerswell@plymouth.gov.uk



Cllr Brian Vincent
416 Blandford Road
Efford
PL3 6JB
Tel: 01752 316902
Email: brian.vincent@plymouth.gov.uk



The Efford Team at Plymouth City Council

Debbie Burton
Neighbourhood
Regeneration Officer
Tel: 01752 306521
Email: debbie.burton@plymouth.gov.uk



Heart of
Efford
Community Partnership